

# **SEMINAR #2**

## **PARTNERSHIPS AND PROCESSES FOR SUCCESSFUL ROAD PROJECTS**

**Moderator – Michael Morris, P.E., NCTCOG**

# Projects & Panelists

- **Multimodal Transportation Improvements**  
Christie Gotti, NCTCOG
- **SH 26 from SH 114 to Cheek-Sparger**  
Brian Barth, TxDOT Fort Worth
- **FM 1938 from SH 114 to FM 1709**  
Renee Lamb, Tarrant County
- **Maintenance & Operational Improvements** (City of Fort Worth)  
Doug Wiersig, Fort Worth
- **SH 170 from SH 114 to IH 35W**  
Elizabeth Mow, NTTA

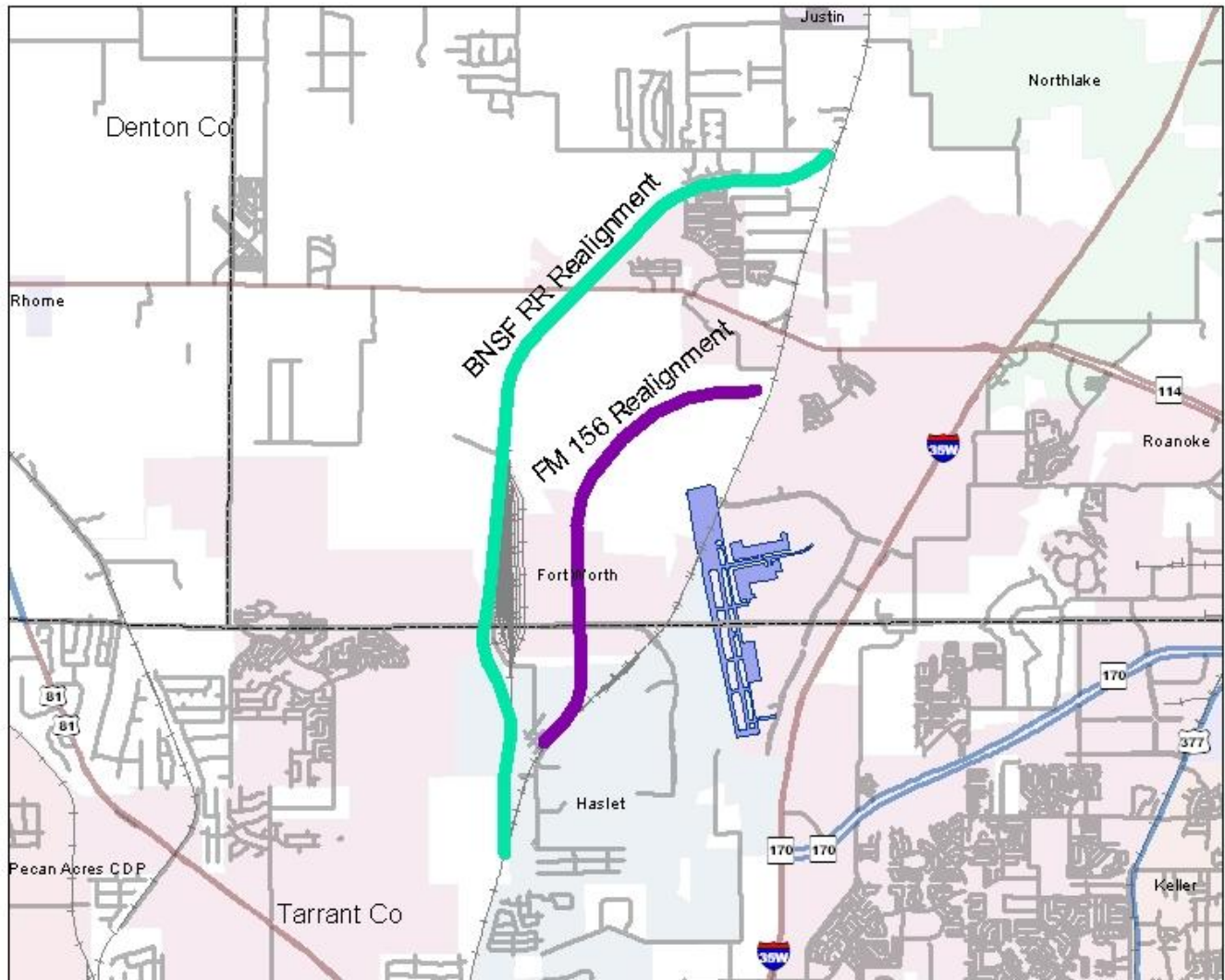
# Multi-Modal Transportation Improvement Project

Christie J. Gotti, NCTCOG

# Multi-Modal Transportation Improvements

## LEGEND

- BNSF RR Realignment
- FM 156 Realignment
- Primary Highway
- Secondary Highway
- Major Arterial
- Minor Arterial
- Minor Arterial
- Rail
- County Line
- Extended Alliance Airport



North Central Texas  
Council of Governments  
Transportation



# Multi-Modal Transportation Improvement Project

- Project includes:
  - ▣ Extension of Alliance Airport runways and parallel taxiways
  - ▣ Relocation and widening of FM 156 to the west of the current alignment
  - ▣ Relocation of the BNSF Railway track to the west of Alliance Airport
- Approved funding - \$100 million  
(\$80 million Regional Toll Revenues, \$20 million in local funds, earmarks, & FAA funds)
- FM 156 opened to traffic in March 2010
- Land Acquisition for the BNSF Railroad will be complete in mid-2012; construction will start in late 2012/early 2013
- Final design for runway extension to start in 2012

# Multi-Modal Transportation Improvement Project

## How to Eliminate Stovepipes

State Highway 121  
Concession Payment



\$80 million loan for rail  
relocation project



Gas tax funding allocated to SH 114/FM 156  
(no throwaway projects)



Alliance Airport runway  
extension able to proceed



FAA to repay investment  
\$10 million per year

**SH 26**

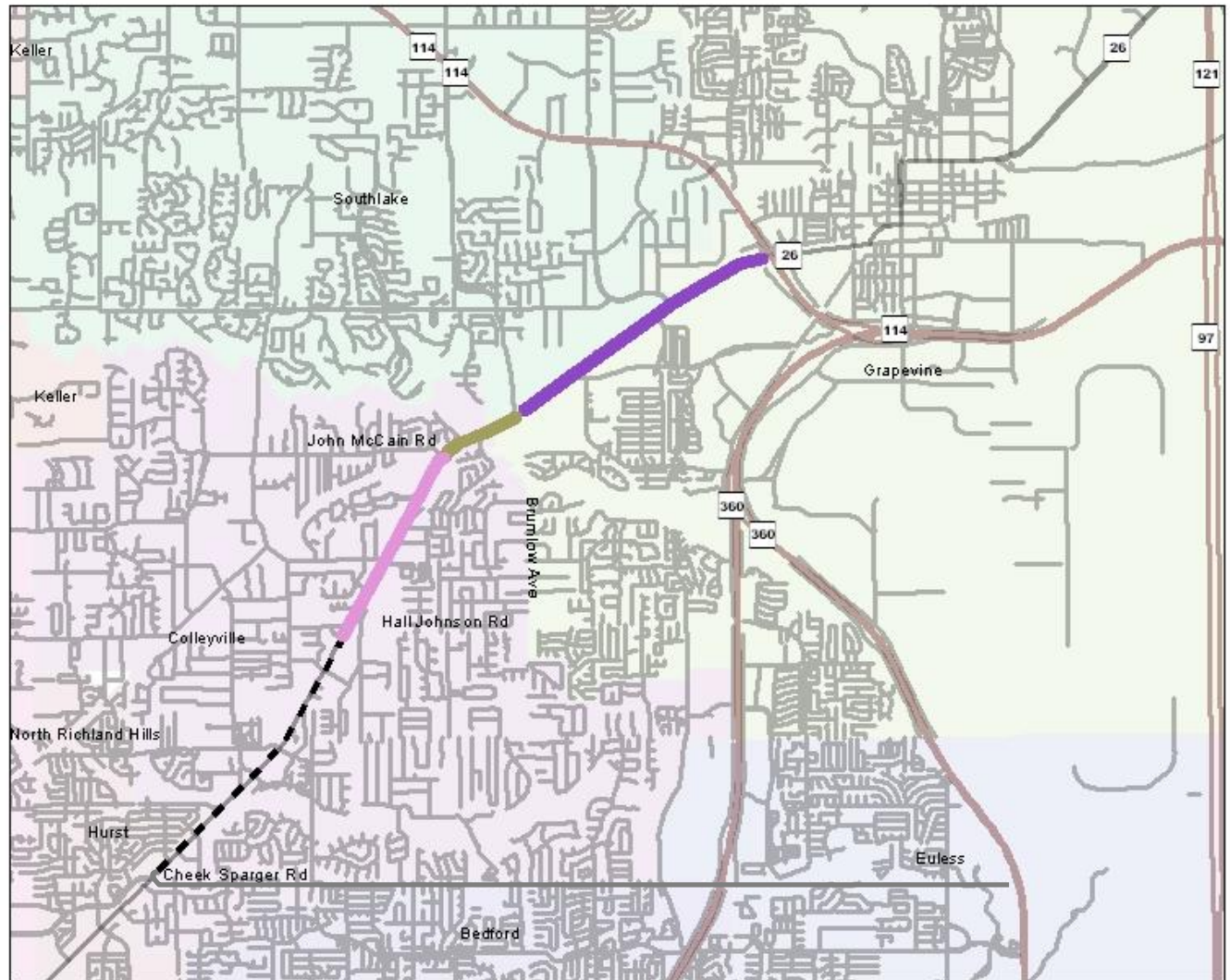
from SH 114 to Cheek-Sparger

Brian Barth, P.E., TxDOT Fort Worth District

# SH 26 from SH 114 to Cheek-Sparger

## LEGEND

-  Phase 1
-  Phase 2
-  Phase 3
-  Phase 4
-  Primary Highway
-  Secondary Highway
-  Major Arterial
-  Minor Arterial



North Central Texas  
Council of Governments  
Transportation





# SH 26 from SH 114 to Cheek-Sparger

## Funding and Status

- Project spans the cities of Grapevine and Colleyville
- TxDOT design began in approximately 2002
- SH 114 to John McCain sections are under construction (funded with a combination of federal, State, and local funds)
- Right-of-way acquisition is 85-95% complete for remaining sections
- Utility relocation underway

# SH 26 from SH 114 to Cheek-Sparger

## Funding and Status

SH 114/SH 121

Under Construction

Brumlow/  
Pool

Under Construction

John  
McCain

Right-of-way &  
Utilities Underway-  
Construction Funded

Hall-  
Johnson

Right-of-way &  
Utilities Underway

Cheek  
Sparger

Committed Funding	Amount
TxDOT (PE/ROW Funds)	\$31,872,675
Tarrant County/City	9,579,799
Economic Recovery Funds (federal funds)	11,897,197
RTC (federal mobility funds)	12,934,115
TxDOT (state match)	3,233,528
<b>Total</b>	<b>\$69,517,314</b>

**FM 1938**

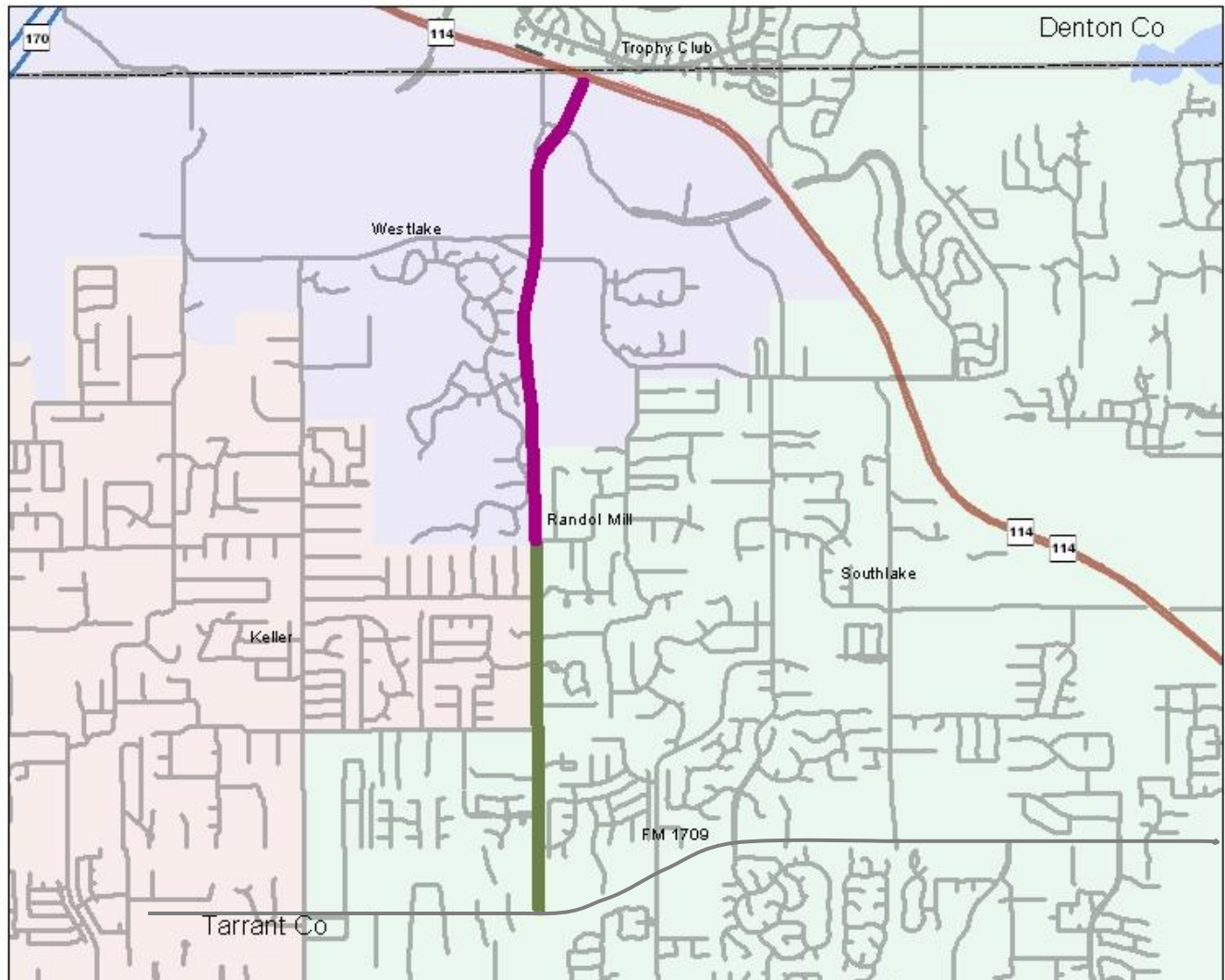
from SH 114 to FM 1709

Renee Lamb, P.E., Tarrant County

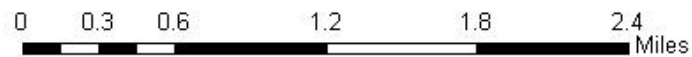
# FM 1938 from SH 114 to FM 1709

## LEGEND

- Phase 1
- Phase 2
- Primary Highway
- Secondary Highway
- Major Arterial
- Minor Arterial
- County Line



North Central Texas  
Council of Governments  
Transportation



# FM 1938 from SH 114 to FM 1709

- Includes the extension of FM 1938 as a four-lane divided roadway
- Phase 1 – SH 114 to Randol Mill
  - Currently under construction
  - Estimated completion date – Summer 2012
- Phase 2 – Randol Mill to FM 1709
  - Estimated start of construction – Fall 2014
  - Estimated completion date – Summer 2016
  - Estimated cost: \$29.5 million
  - Phase 2 Funding Sources:\*

Phase 2 Funding Sources*	
City of Southlake	\$4.0M
Tarrant County	\$4.8M
TxDOT	\$4.2M
Federal	\$16.8M
<b>Total</b>	<b>\$29.8M</b>

\* Funding levels are under review and are subject to change

# FM 1938 from SH 114 to FM 1709

- A collaborative effort that includes the cities of Keller, Westlake, and Southlake, as well as Tarrant County and TxDOT
- Local agencies agreed to pay for preliminary engineering, environmental and right-of-way costs
- TxDOT agreed to provide 20% match to federal dollars to fund all construction-related costs and assume maintenance responsibilities
- When both phases are complete, this project will provide both traffic congestion relief and economic development opportunities throughout northeast Tarrant County

# **Maintenance & Operational Improvements**

## City of Fort Worth (Tarrant County, Precinct 3)

Doug Weirsig, PhD, P.E., City of Fort Worth

# Maintenance & Operational Improvements

- Resurfacing, shoulder & drainage improvements
- Traffic signal improvements
- Rail road quiet zones

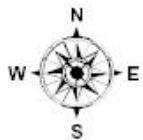
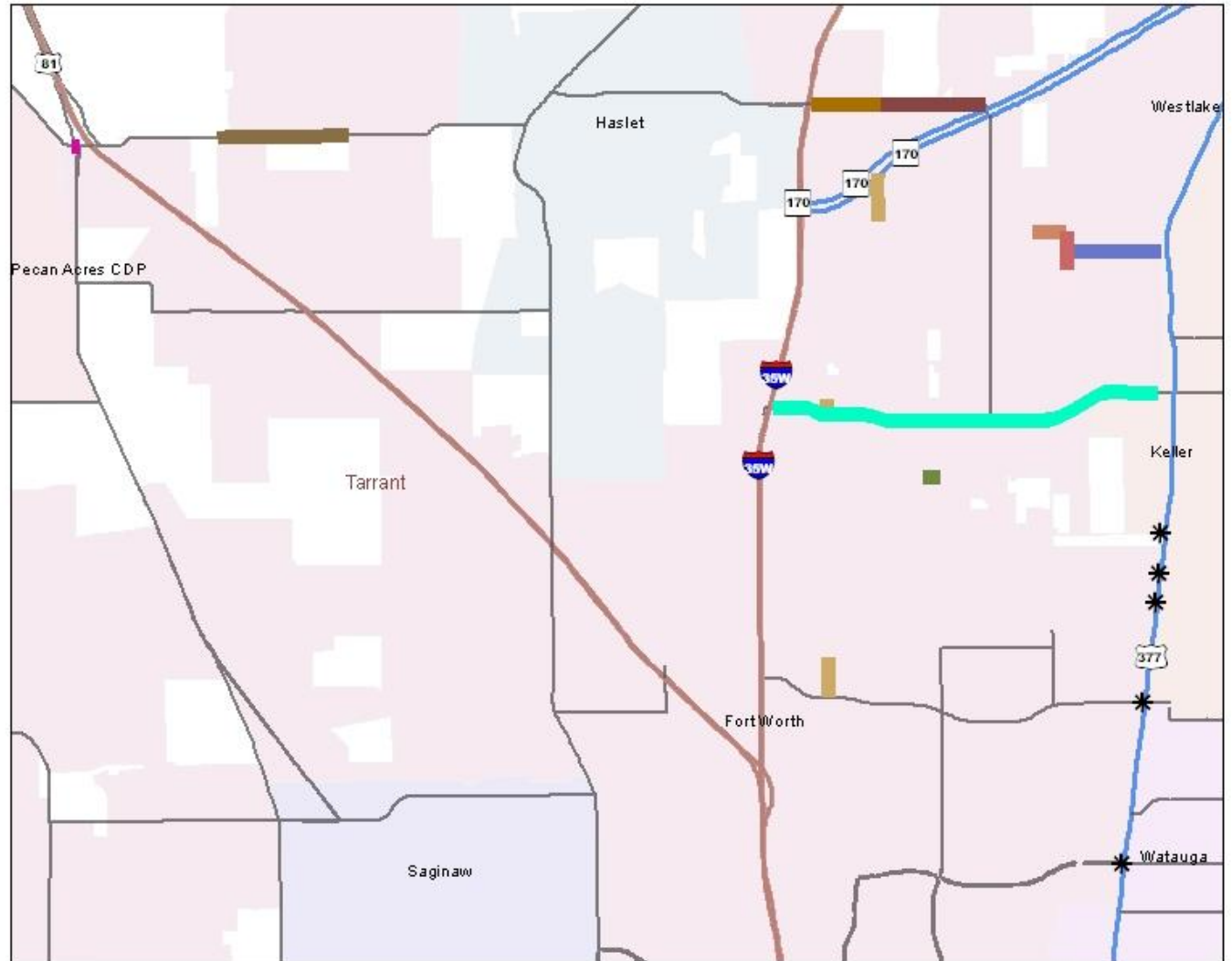


# City of Fort Worth Maintenance and Operational Improvements

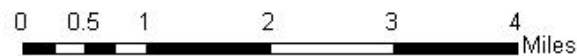
Precinct 3

## LEGEND

- AVONDALE HASLET AT US287 INTERSECTION
- GOLDEN TRIANGLE
- QUIET ZONE
- KELLER HASLET RD
- N CAYLOR RD
- OLD DENTON RD
- AVONDALE HASLET RD
- RAY WHITE RD
- TIMBERLAND BLVD
- W CAYLOR RD
- WESTPORT PKWY
- Primary Highway
- Secondary Highway
- Major Arterial
- Counties\_Expanded MPA



North Central Texas  
Council of Governments  
Transportation

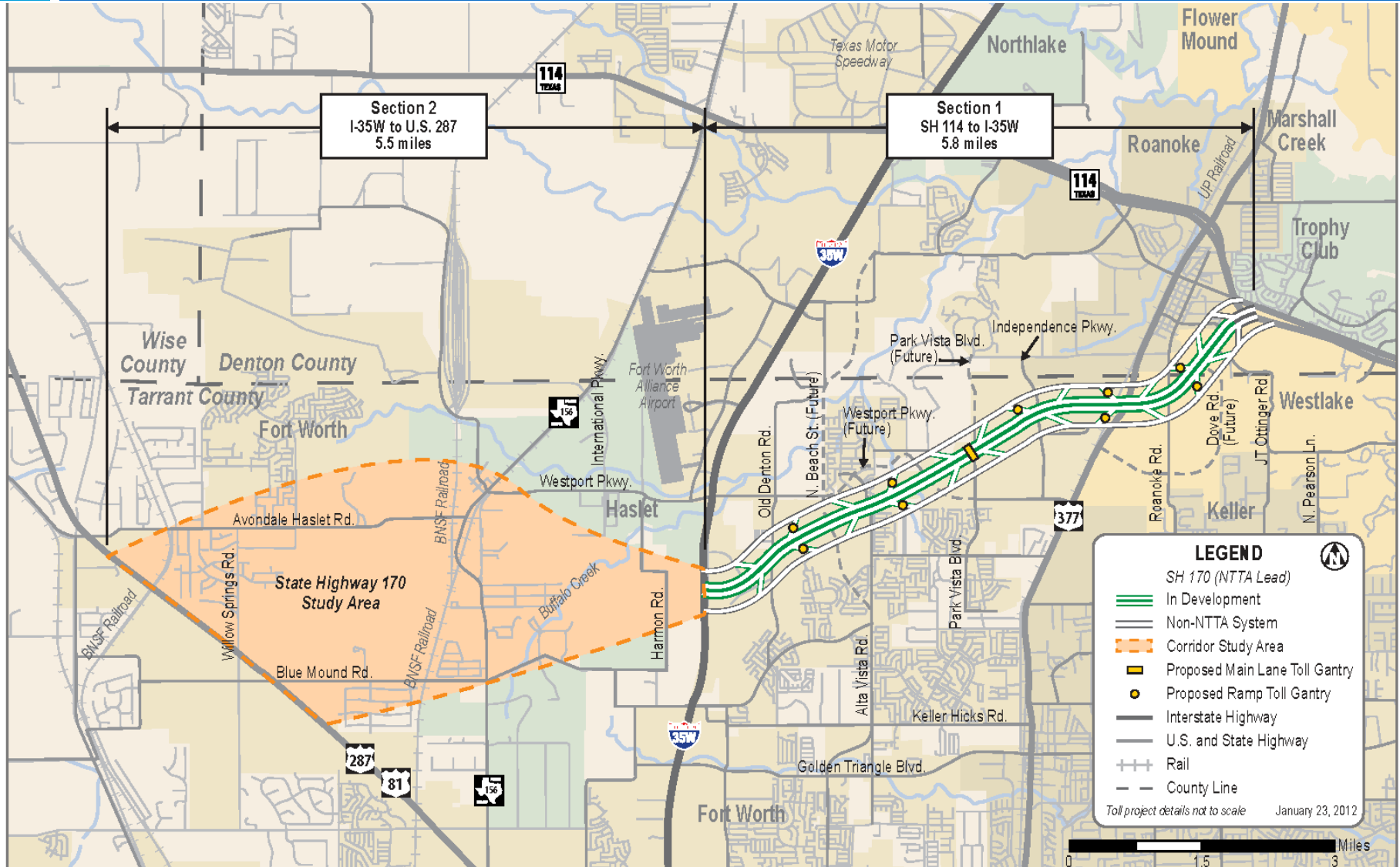


# SH 170

from SH 114 to IH 35W

Elizabeth Mow, P.E., North Texas Tollway Authority

# SH 170 from SH 114 to IH 35W (Section 1)



# SH 170 from SH 114 to IH 35W (Section 1)

- From SH 114 to IH 35W (approximately 5.8 miles)
- Environmental clearance to construct six-lane tollway between existing frontage roads
- Environmental work began September 2009
- Anticipated completion of the Environmental Clearance – mid 2013
- Total project cost – approximately \$300 million
- Construction completion date – TBD

# SH 170 from SH 114 to IH 35W (Section 1)

- Partnership between NTTA, TxDOT and FHWA
- Denton Co, Tarrant Co, Fort Worth, Haslet, Roanoke, Trophy Club and Westlake
- NTTA has first option right per SB 19 by the 82<sup>nd</sup> Texas Legislature
- On-going stakeholder and public meetings
- Construction completion TBD based on available funding
- Possible future extension from IH 35W to US 287

# Questions?

## **Michael Morris, P.E.**

NCTCOG

mmorris@nctcog.org

817/695-9240

## **Brian Barth, P.E.**

TxDOT Fort Worth District

brian.barth@txdot.gov

817/370-6514

## **Elizabeth Mow, P.E.**

NTTA

emow@ntta.org

214/224-2157

## **Christie Gotti**

NCTCOG

cgotti@nctcog.org

817/608-2338

## **Renee Lamb, P.E.**

Tarrant County

rlamb@tarrantcounty.com

817/884-1173

## **Doug Wiersig, PhD, P.E.**

City of Fort Worth

doug.wiersig@fortworthtexas.gov

817/392-7913