

December 2010: Structures yard at IH-635 and SH 121 intersection





December 2010: New structures and paving north of DFW Airport





December 2010: SH 114 on the east end of the DFW Connector project





December 2010: Grading work east of DFW Airport





December 2010: Southbound SH 121 ramp to westbound SH 114





December 2010: New eastbound SH 114 to northbound SH 121 bridge





December 2010: Intersection of SH 114 and SH 121 near DFW Airport





December 2010: Grading and wall work at DFW Airport's north entrance





December 2010: "Gumby" detour at DFW Airport's north entrance





December 2010: New concrete paving in the SH 114/121 median





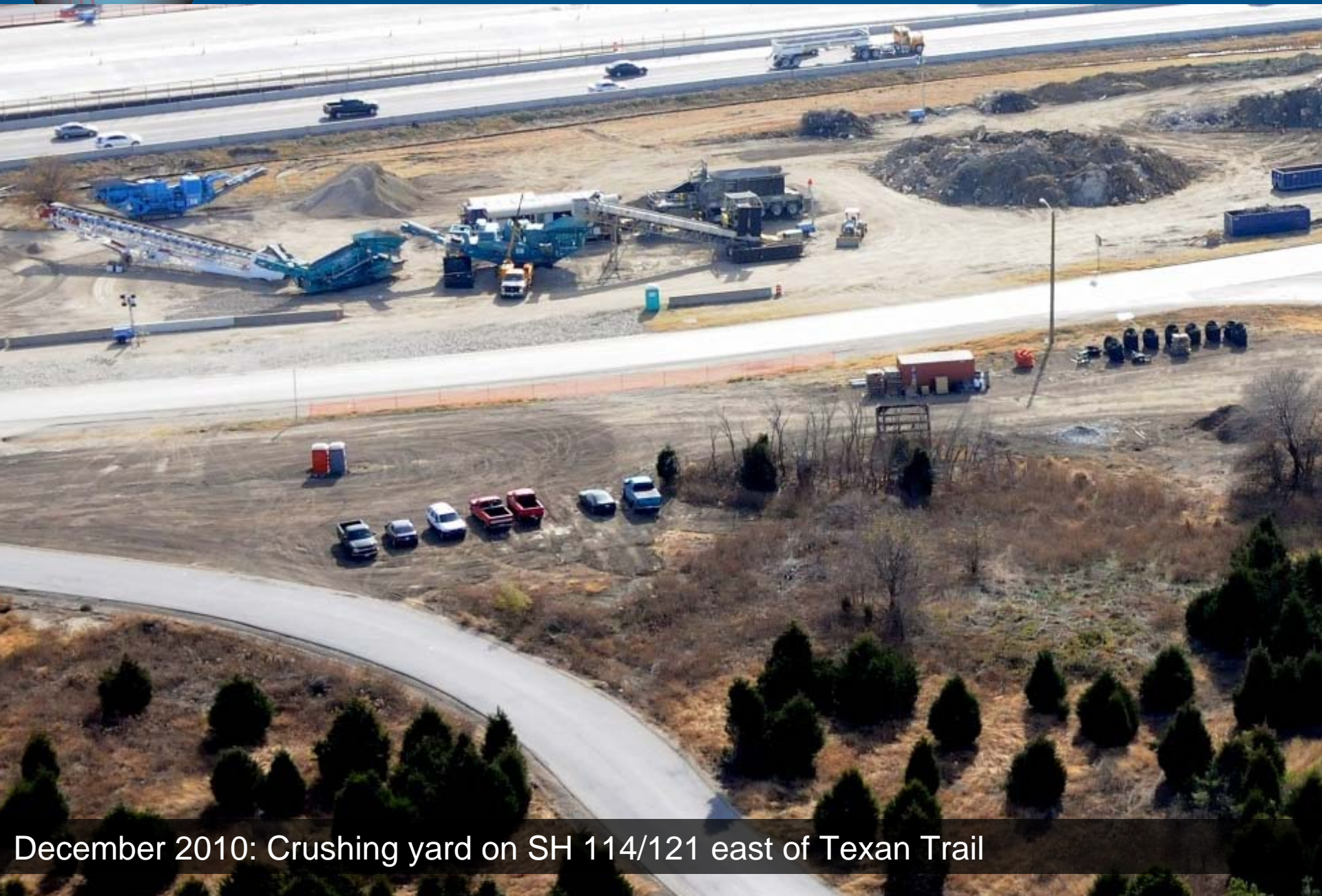
December 2010: New concrete paving in the SH 114/121 median





December 2010: Concrete batch plant north of SH 114/121





December 2010: Crushing yard on SH 114/121 east of Texan Trail





December 2010: Field office at SH 114 and Main Street





December 2010: Main Street Bridge





December 2010: Detour pavement on SH 114/121 at Main Street





December 2010: SH 114 west of Main Street





December 2010: SH 114 at SH 26





December 2010: SH 114 at FM 1709





December 2010: SH 121 south of SH 114



