



Lessons Learned: The Major Impacts of the NTE on North Richland Hills

Mark Hindman
City Manager

Anticipating Issues and Communicating with Key Stakeholders

The Keys to Successfully Handling Impacts of
Construction on the North Tarrant Express

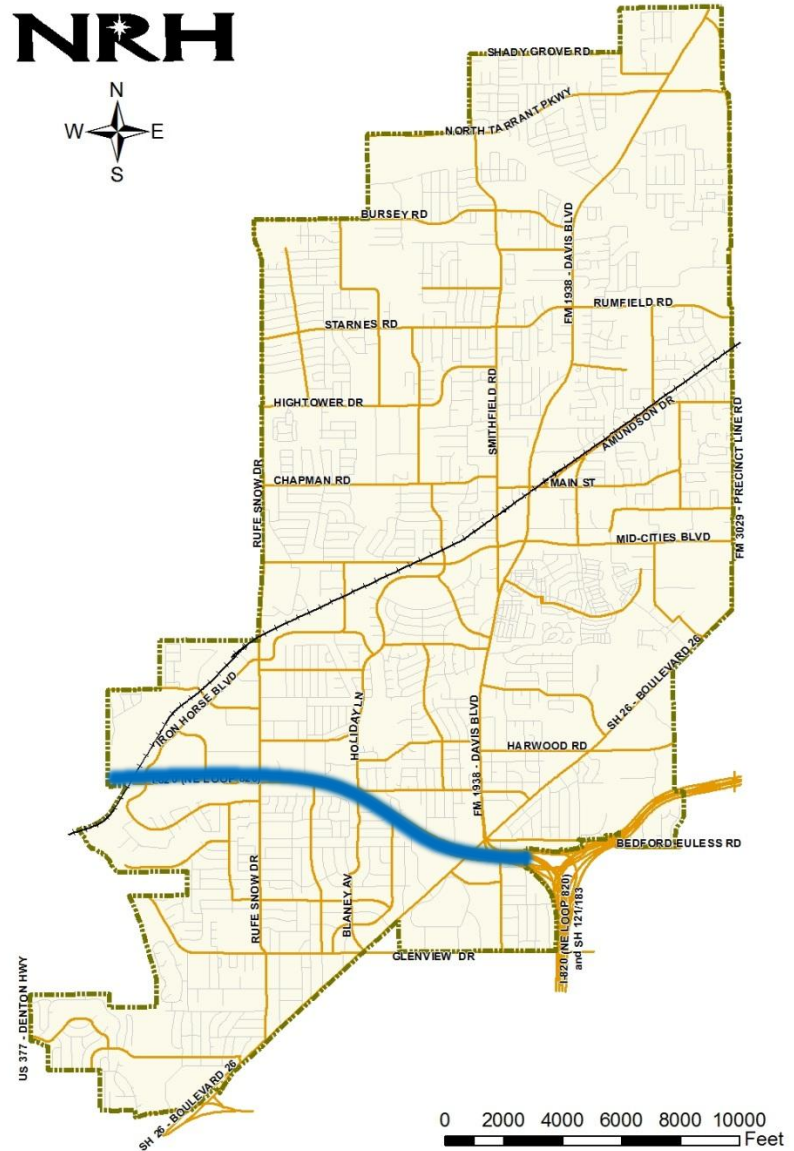




North Tarrant Express Through NRH

- Approximately 7 Miles
- 10 Ramps
- 2 Bridges
- 2 Underpasses
- 40% of Retail Sales
- 25% of community separated by Loop 820

NRH



facebook®



NRH Business Mobility Team

- **Purpose**
 - Serve as business, employer and community advocates
 - Provide feedback and input on road closures and detours
- **Mobility Team Actions**
 - Determined the schedule for the Iron Horse Bridge closure
 - Affected only one shopping season
 - Rufe Snow Ramp – Kept open continuously
 - Boulevard 26 Exit – Closure time minimized by use of temporary ramp



NRH Public Safety



- Constrained traffic enforcement
- Responding to construction zones
- Access to portions of community

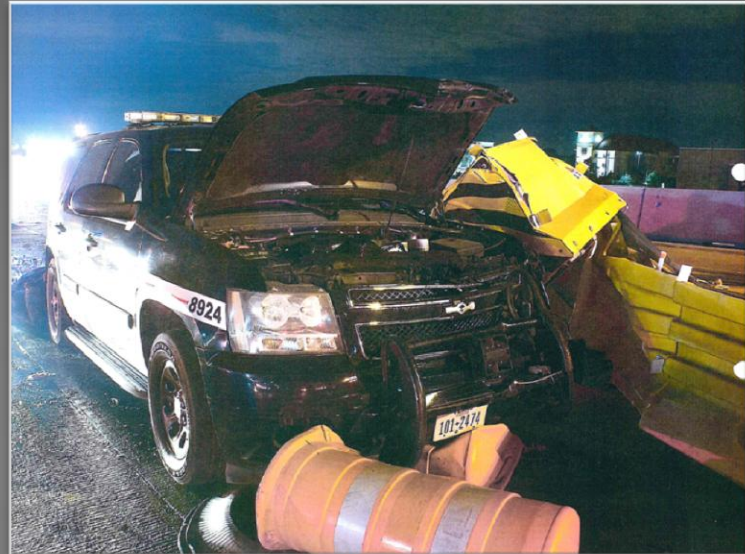
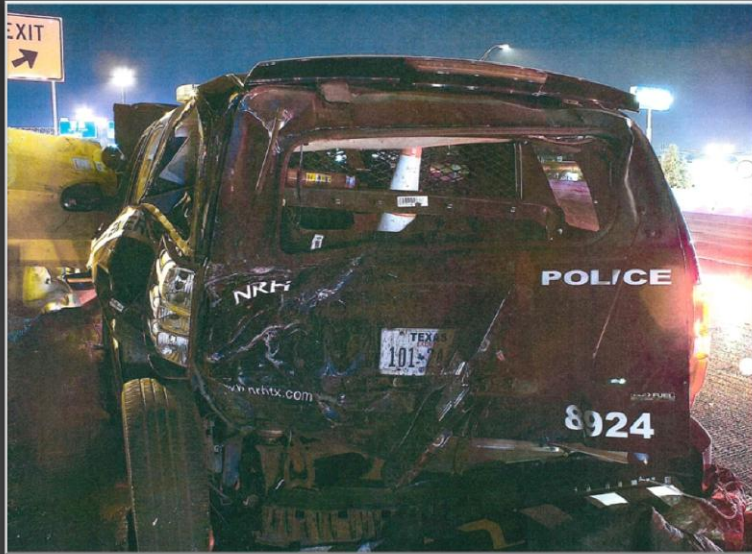
Public Safety Statistics (April 2012 – Present)

- Calls for service on NE Loop 820: 3,954
- Off duty officers assisted with road and ramp closures over 200 times



Photos From Officer Involved Accident

NE Loop 820 - November 2013



NRH Public Safety



- Constrained traffic enforcement
- Responding to construction zones
- Access to portions of community

Public Safety Statistics (April 2012 – Present)

- Calls for service on NE Loop 820: 3,954
- Off duty officers assisted with road and ramp closures over 200 times



Upon Completion

With the Construction came opportunities:

- Improved value and commercial development
- Remodeling was completed on various businesses while road is under construction



**WinCo
FOODS**



Conclusions

- Be careful where you build City Hall
- Do road projects during a recession
- There is light at the end of the tunnel



Conclusions

- Be careful where you build City Hall
- Do road projects during a recession



Conclusions

- Be careful where you build City Hall
- Do road projects during a recession
- There is light at the end of the tunnel

