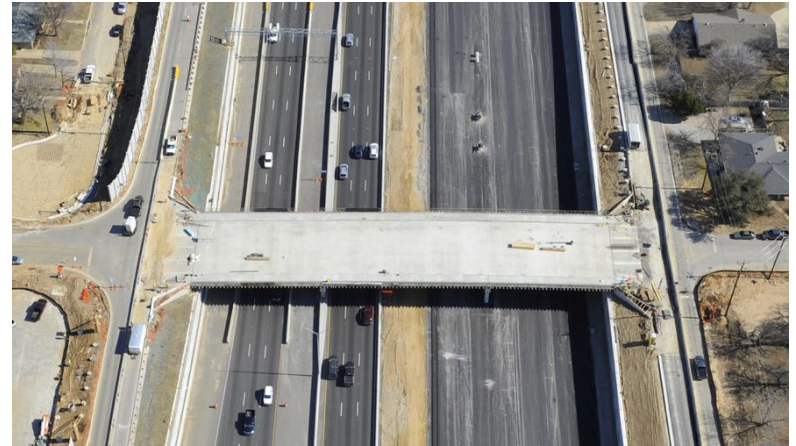


A Model of Innovation



February 2013

[Project Status]

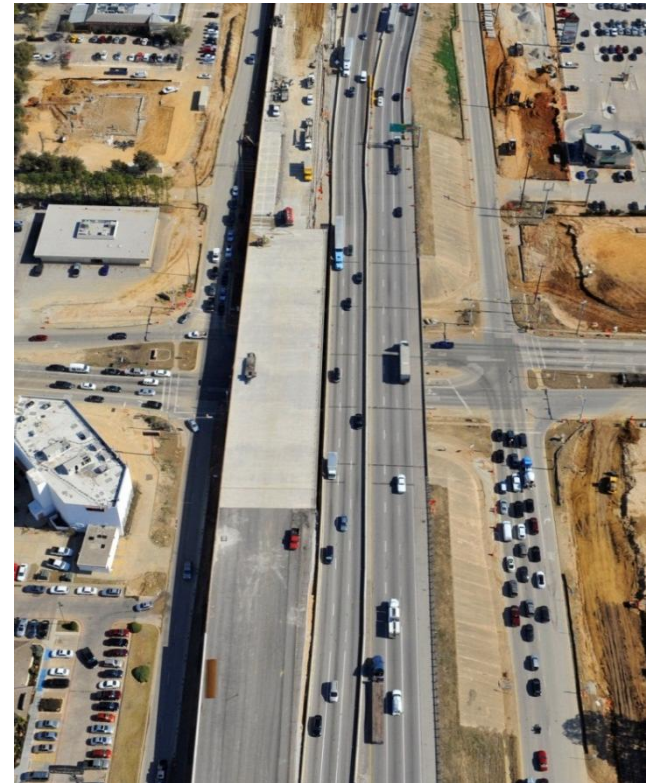
- 50% completed
- Now in **3rd year** of construction
- On track and on budget for mid-2015 completion



IH 820 at Denton Highway 377

[Project Overview]

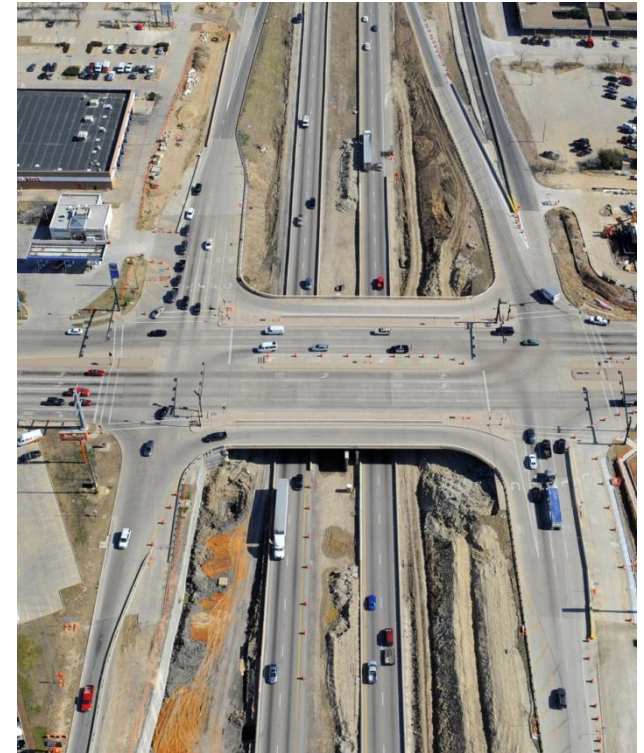
- Delivering critical traffic relief in one of nation's fastest-growing regions
- Designed, built, financed, operated and maintained by NTE Mobility Partners
- \$2.5 billion asset for the State of Texas



Airport Freeway at Central Drive

[NTE by the Numbers]

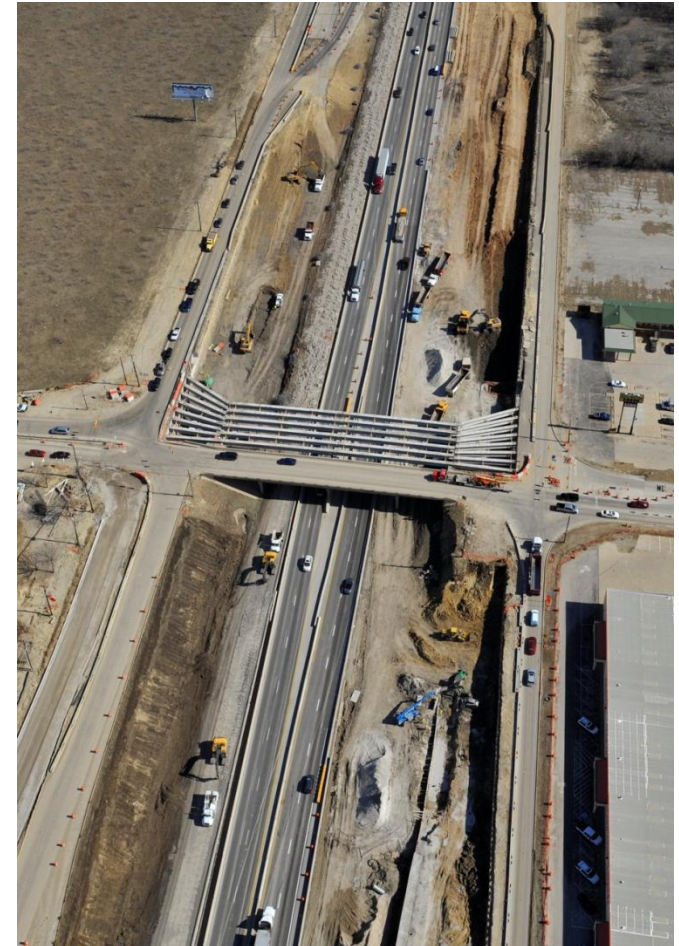
- **150,000+** cars per day
- **13.5-mile** corridor
- **6** cities (combined population of more than one million)
- **3** Chambers of Commerce
- **1** county



IH 820 at Rufe Snow Drive

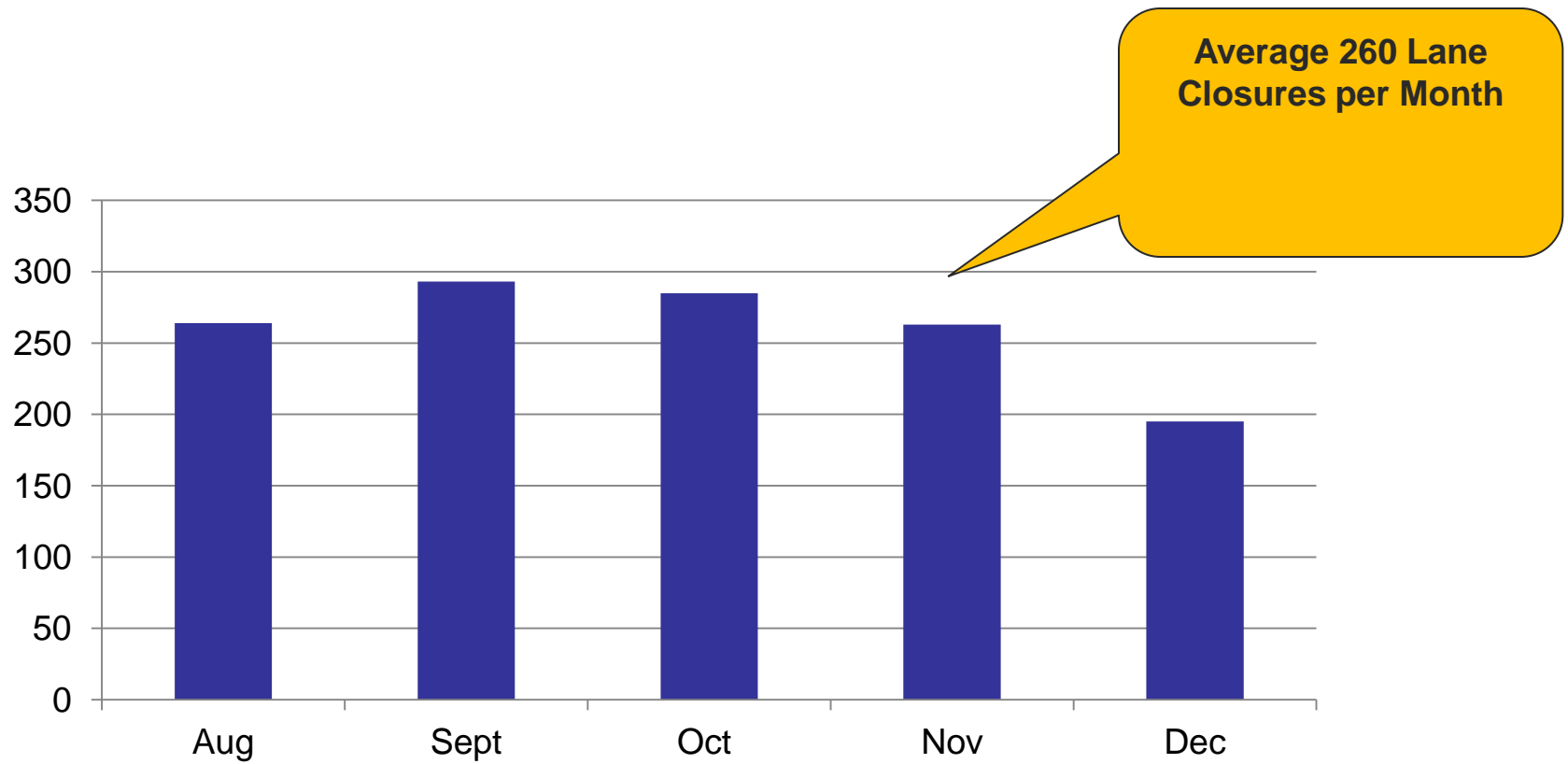
[NTE by the Numbers]

- **1,262** workers in corridor
- **117+** companies employed
- **22.89M** pounds of rebar tied
- **2.29M** cubic yards of dirt moved
- **140,000** cubic yards of concrete poured
- **\$600M** in construction

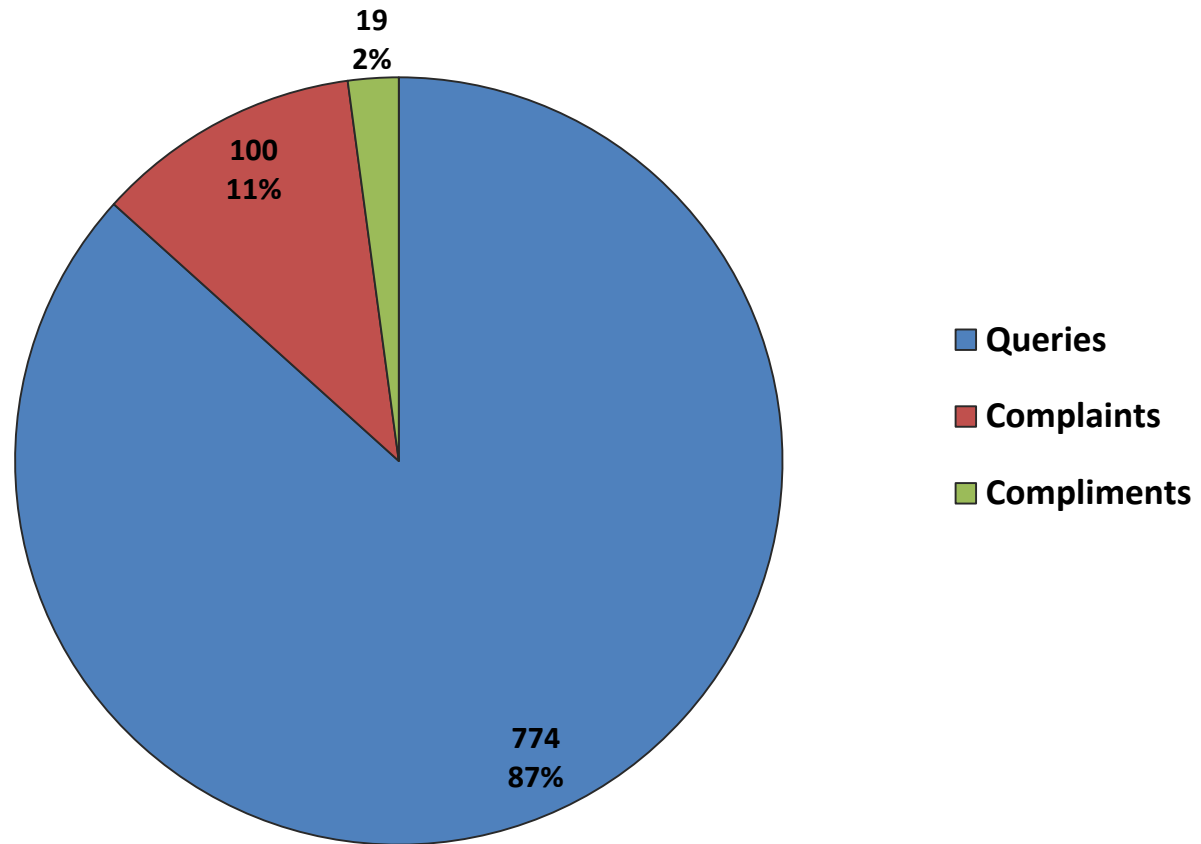


IH 820 at Haltom Road

[2012 Lane Closures]



[2012 Public Query Log]



[Major Milestones]

- **10 bridges** demolished and under reconstruction
- **More than 2,800** lane closures
- **Opening of** Hurstview bridge!



Haltom Road bridge demolition

[Before/After: 35W/820 Intchg]

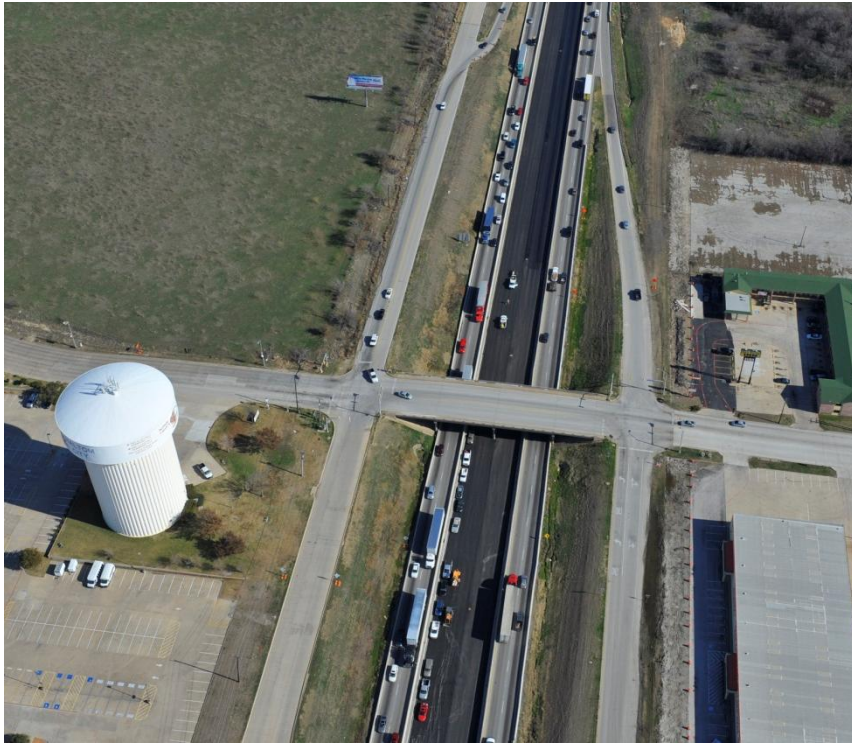


*IH 35W/IH 820 Interchange
Facing East - 2011*



*IH 35W/IH 820 Interchange
Facing East - 2013*

[Before/After: Haltom Road]

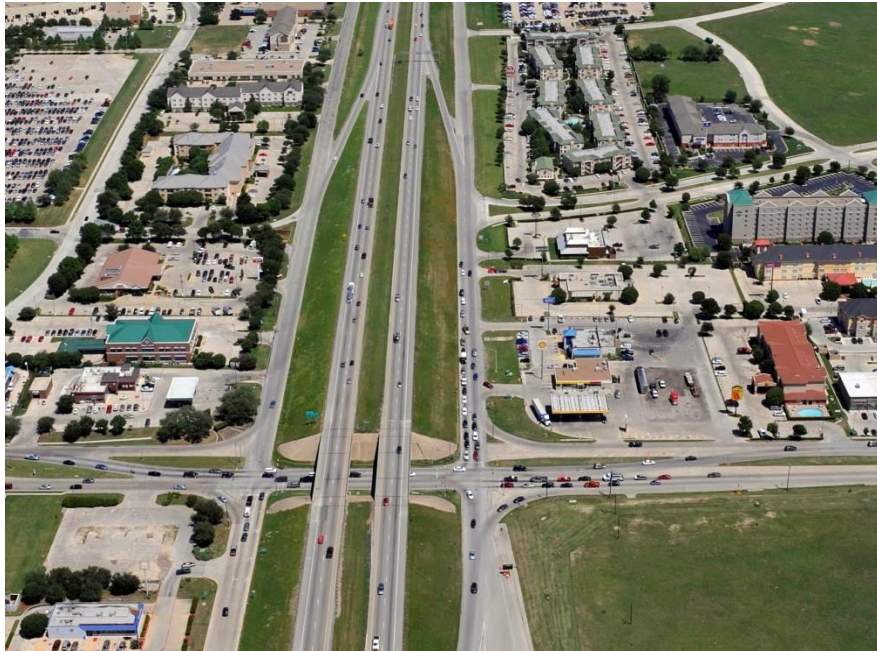


IH 820 at Haltom Road- 2011



IH 820 at Haltom Road - 2013

[Before/After: Beach Street]



IH 820 at Beach Street - 2011



IH 820 at Beach Street - 2013

[Before/After: Hurstview Bridge]

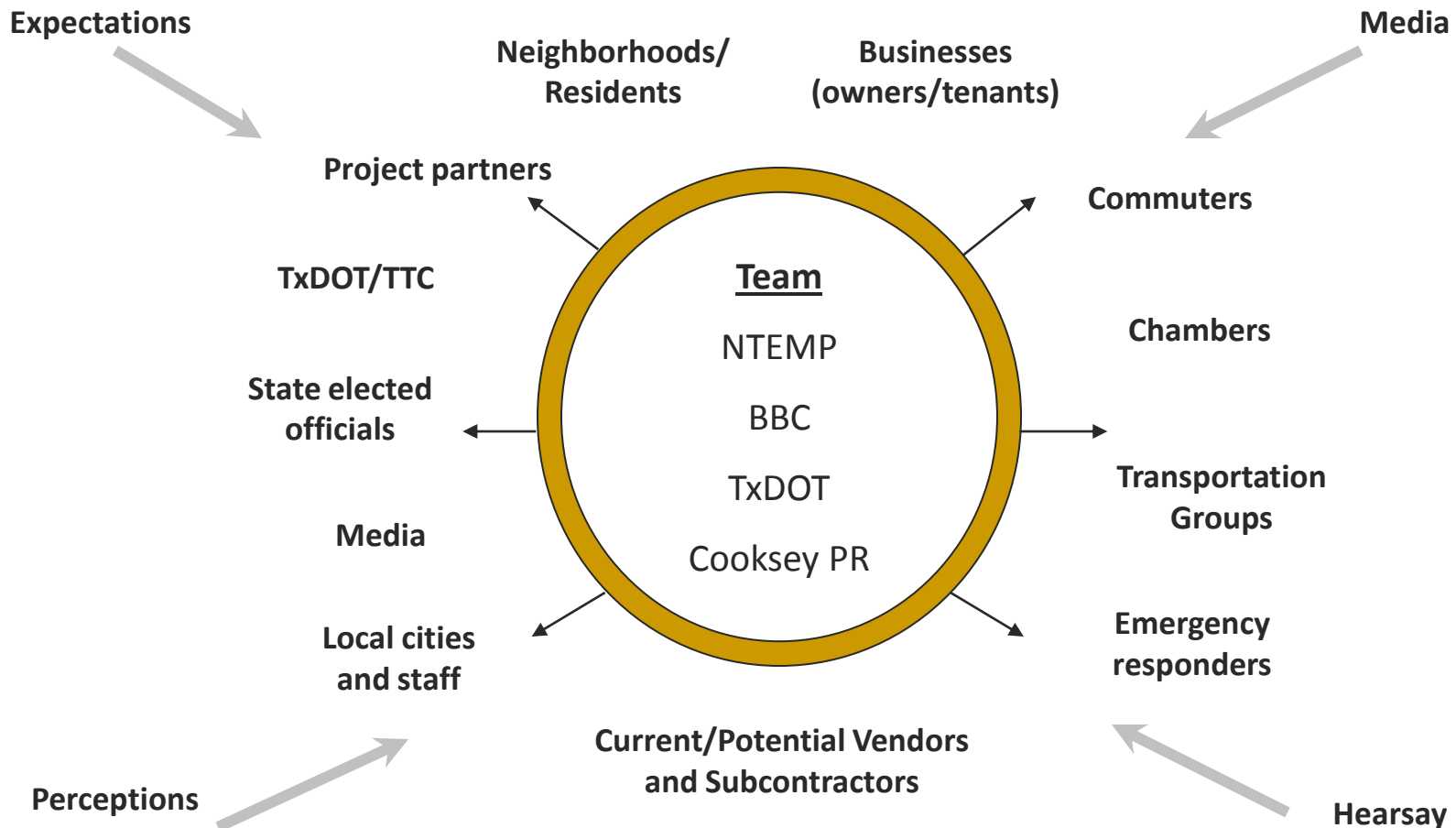


Hurstview Drive - 2011



Hurstview Drive - 2013

[Communications Matrix]



[Public Education]

- Monthly presentations to cities and Chambers
- Neighborhood and business meetings
- North Texas Commission webinar
- Civic Club meetings
- Public open houses



Public Open House – October 2012

[Keeping You Informed]



Project Website
www.NorthTarrantExpress.com



Fan us on Facebook



Information Hotline
1-888-NTE-2015



Follow us @NTEExpress



Information Center
8713 Airport Freeway, Suite 100
North Richland Hills, Texas 76180