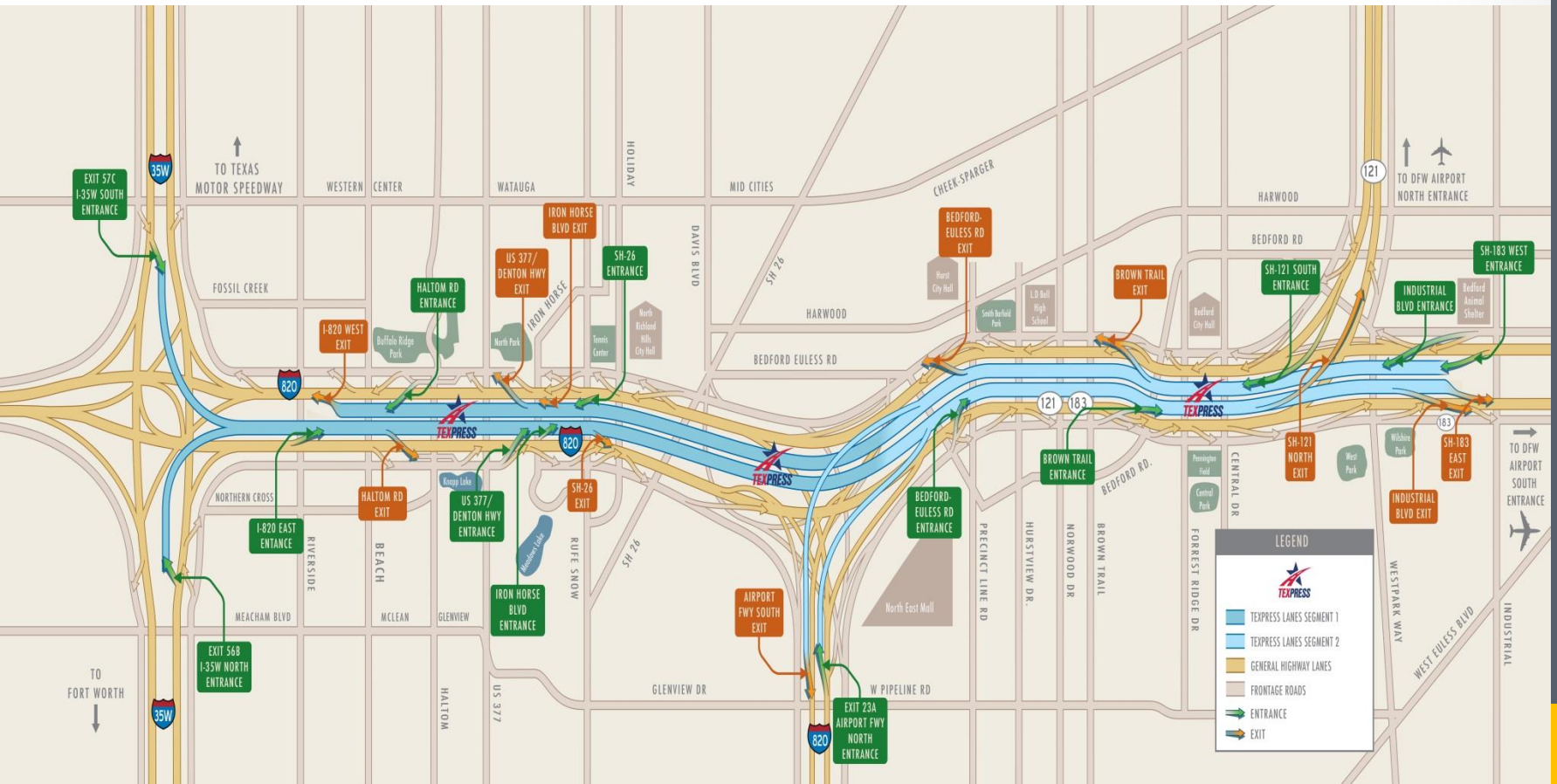




Northeast Tarrant Transportation Summit
I-35W Update
Robert Hinkle, Director of Corporate Affairs,
North Tarrant Express Mobility Partners

Segments 1 & 2

Airport Freeway & Loop 820



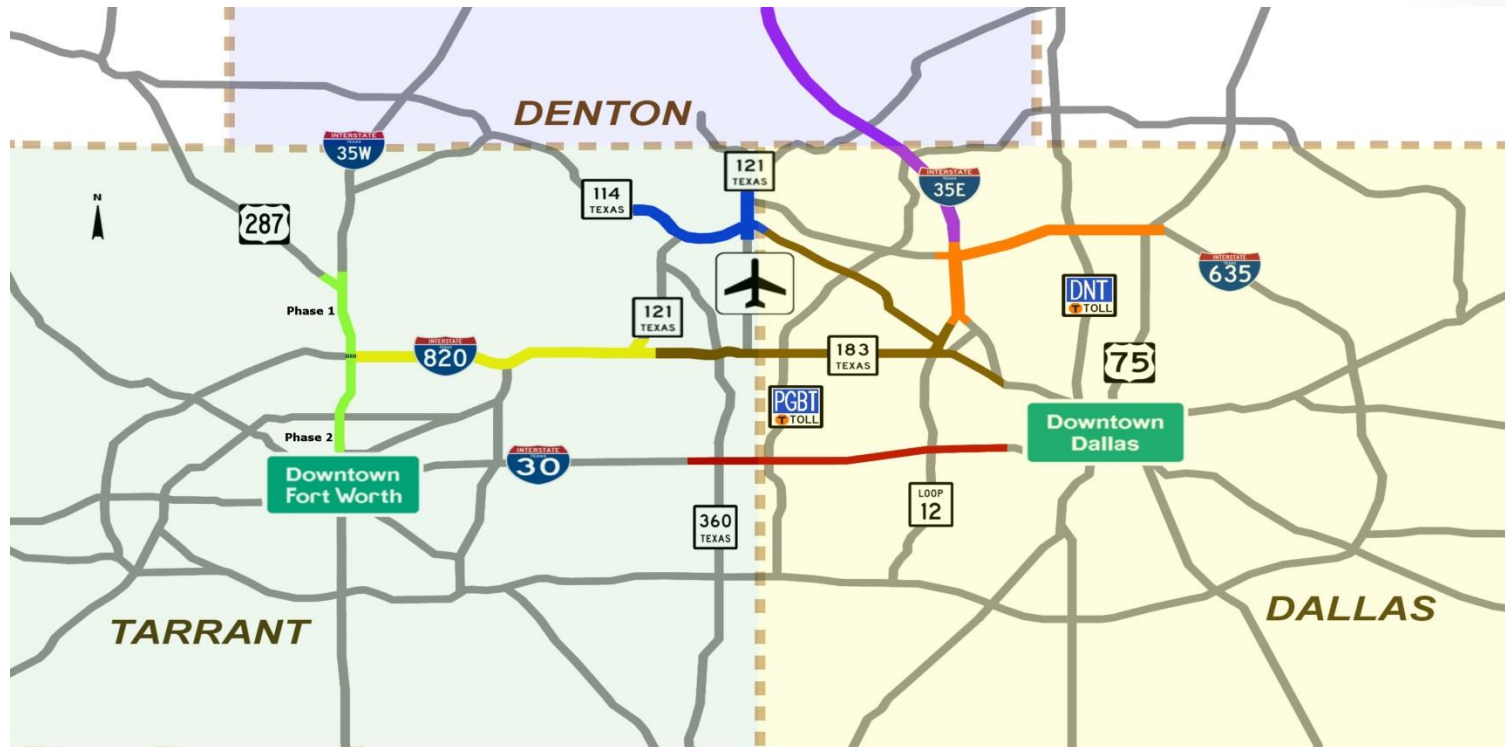
This map can be found at www.NTETEXpress.com

Operations & Maintenance

- Ordinary maintenance, cleaning and mowing
- Assistance to motorists in need
 - Please call 817-614-8706
- Snow and ice removal
- Incident response



Project Benefits



NTE PROJECT Open <i>Pay by shape and size</i>	NTE 35W PROJECT Phase 1 Opens 2016 Phase 2 Opens 2018 <i>Pay by shape and size</i>	LBJ PROJECT Open <i>Pay by shape and size</i>	DFW CONNECTOR Open <i>Pay by axles</i>
I-30 PROJECT Opens 2016 <i>Pay by axles</i>	I-35E PROJECT Opens 2018 <i>Pay by axles</i>	MIDTOWN EXPRESS Opens 2018	

North Texas TEXpress Lanes System

Segment 3A - Progress

I-35W – Downtown to I-820 Interchange

Construction:

- Right-of-way 75% complete
- 34% complete overall
- 165+ companies
- 100 Contracts w/ 75 DBE firms
- 1,285 daily workers
- 1.7M man hours worked

O&M

- Spent \$1M on pothole repair



Segment 3A - Safety

I-35W – Downtown to I-820 Interchange

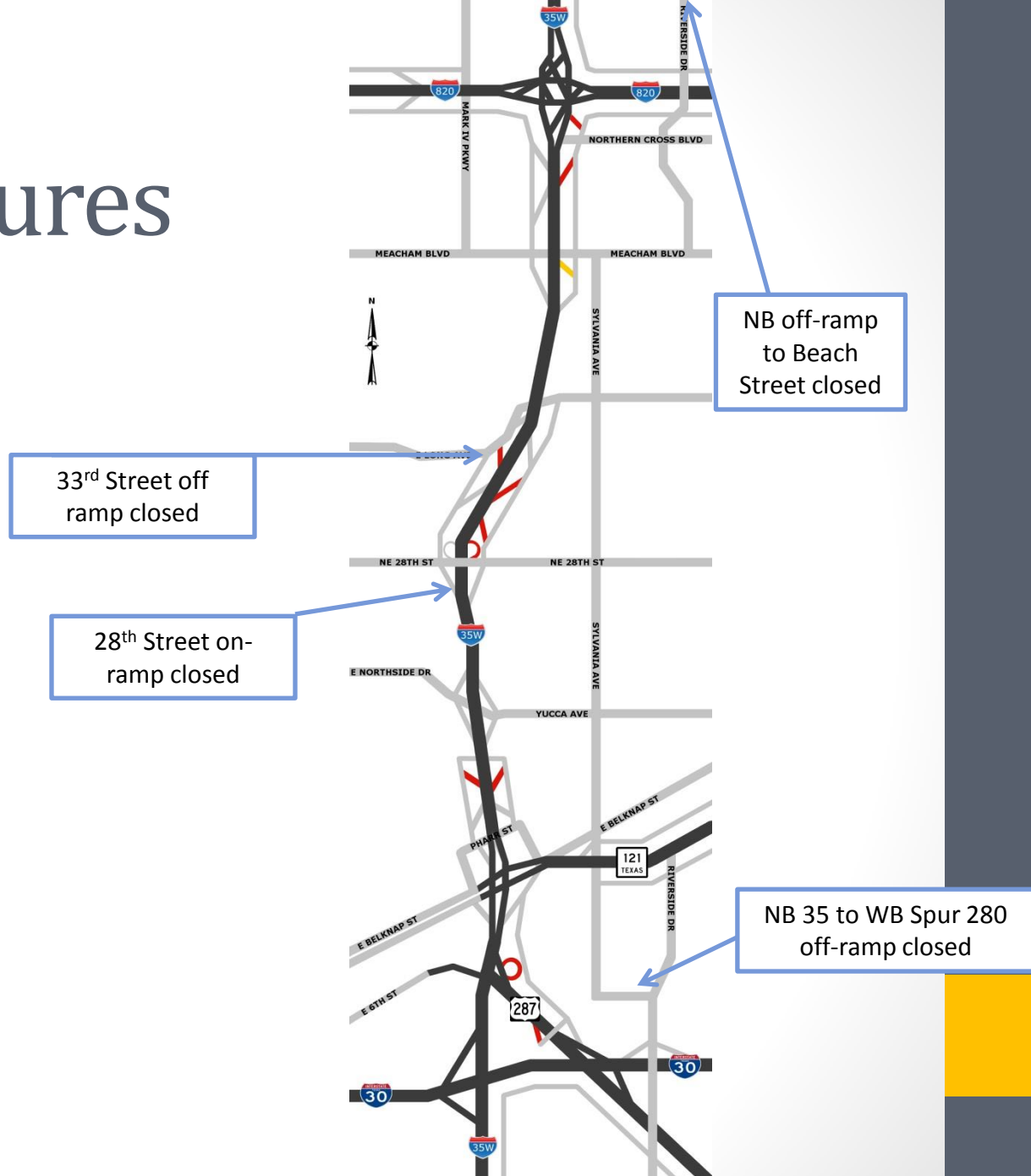
SAFETY

- 5,000 safety and environmental orientations have been completed
- 1.3 recordable incident rate, compared to national average of 3.9
- Most recent training class was excavation training, partnered with FWFD



Long Term Ramp Closures

- Ramp closure map is updated monthly and is posted on the North Tarrant Express website

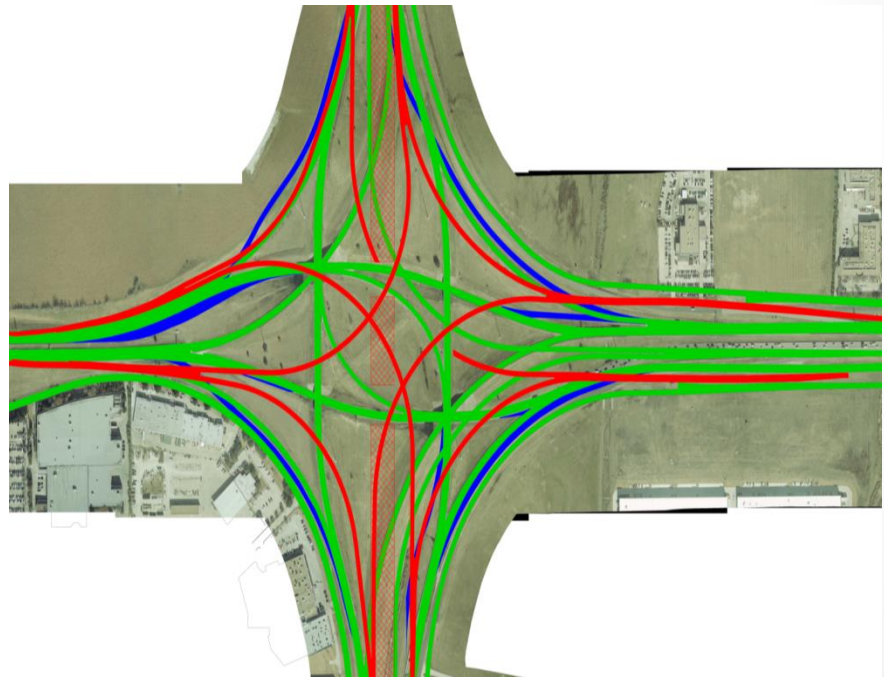


Segment 3A - Progress

I-35W – Downtown to I-820 Interchange

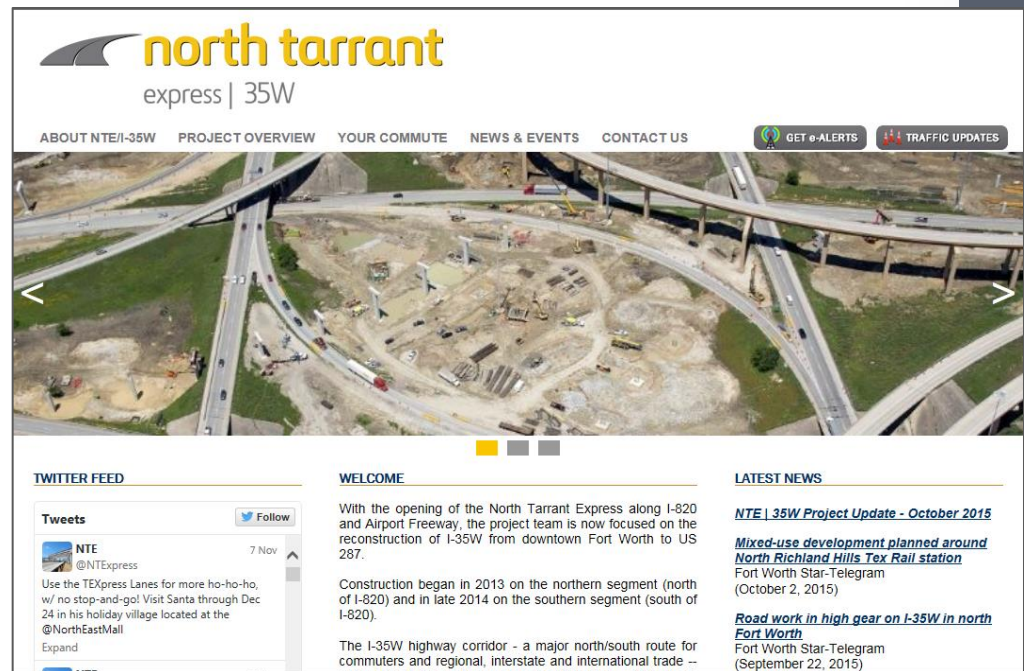
UPCOMING RAMP CHANGES

- The direct connector from eastbound I-820 to northbound I-35W will be a **right-hand** exit. This change should be occurring later this month.



Keeping Public Informed

- Project website
- Twice-weekly lane closure alerts
- As-they-happen incident alerts
- Traditional media
- Social media (Twitter, Facebook)
- Monthly project updates
- Community presentations
- City Council presentations
- Public open houses



Segment 3A – Blackout Periods

I-35W – Downtown to I-820 Interchange

EASTER

- March 24 – 28

TEXAS MOTOR SPEEDWAY

- April 6 – 11



Belknap St. at I-35W

I-35W Progress Video

February 2016

Questions?



Project Website:

www.NorthTarrantExpress.com



Follow us on Twitter:

@NTExpress



Like us on Facebook:

NorthTarrantExpress