

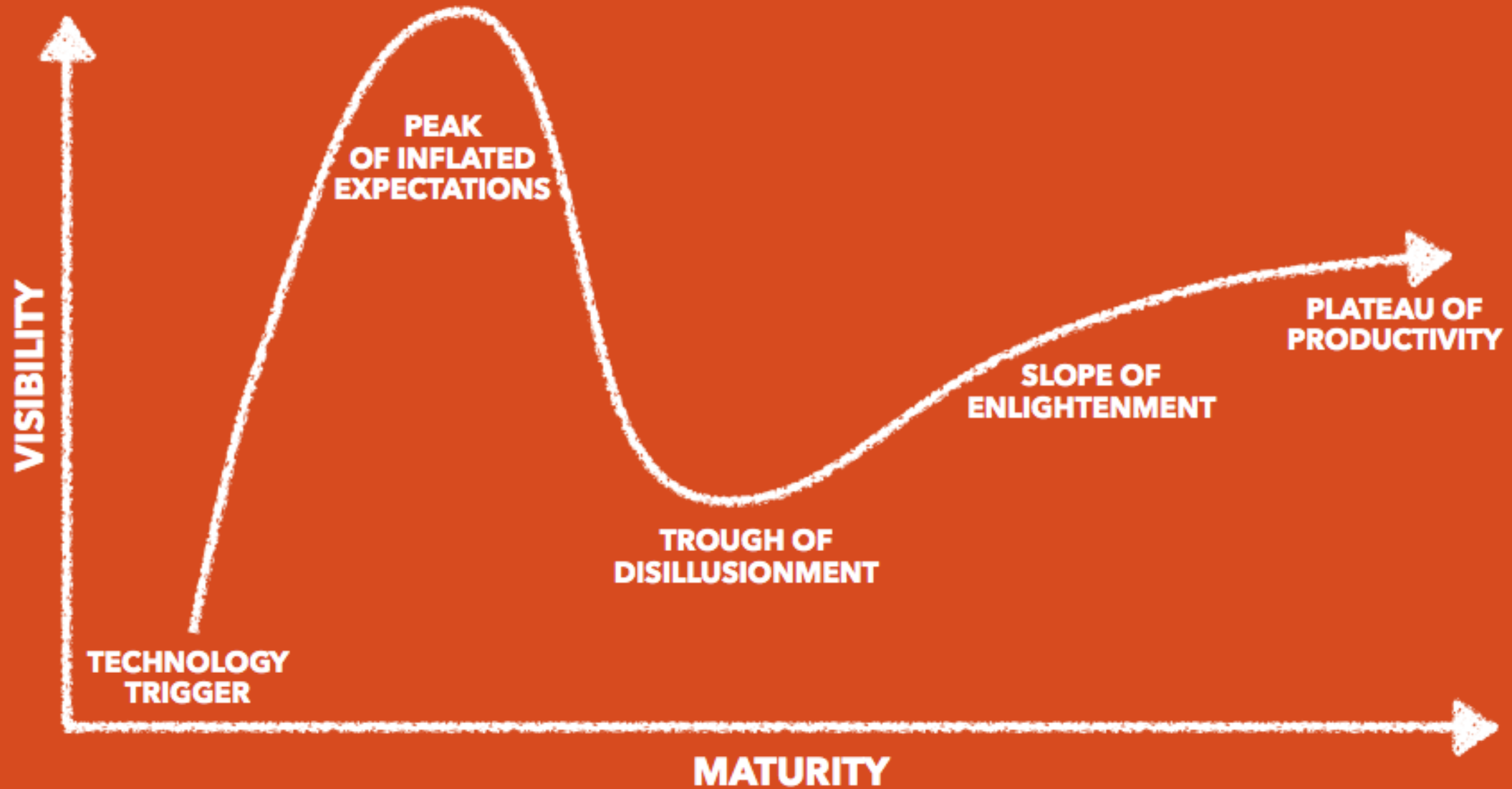


The Future of Smart Cities in America

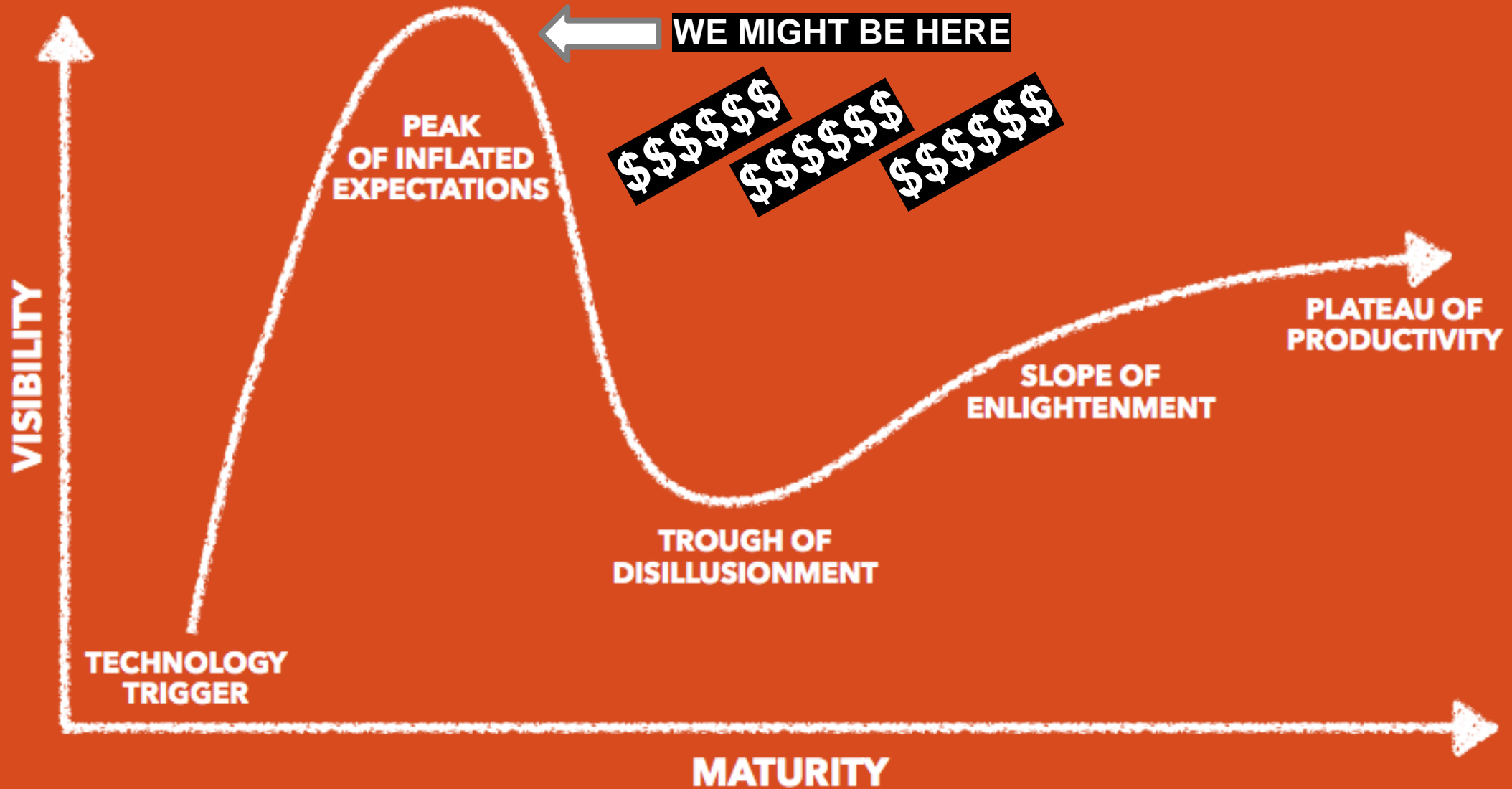
Steven Duong, AICP
Associate Vice President, Design + Planning and Economics
AECOM

February 16, 2018

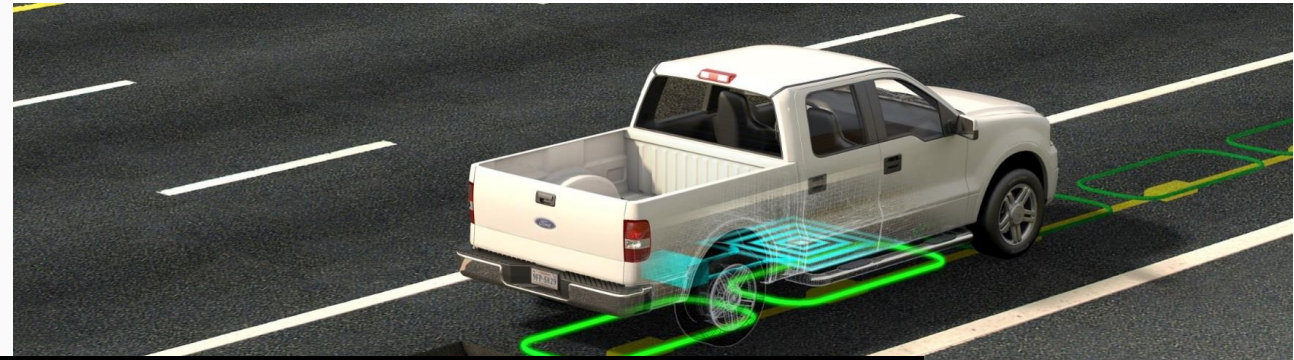
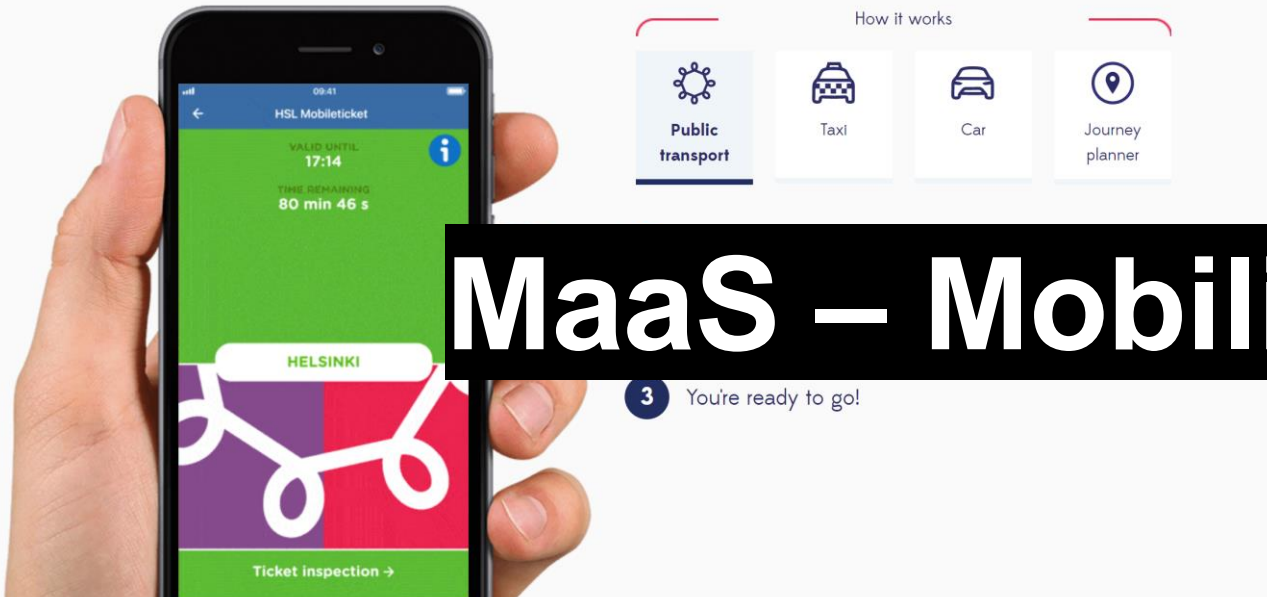
THE HYPE CYCLE



THE HYPE CYCLE



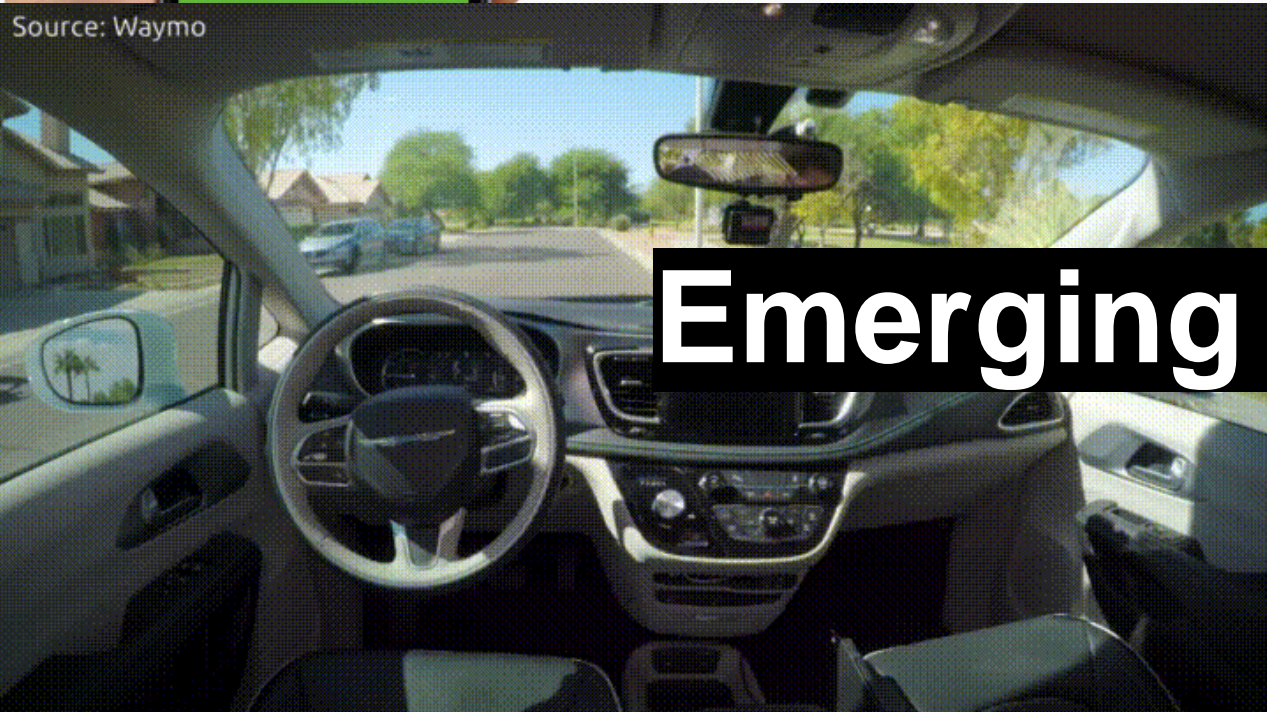
Whim covers all your journeys



MaaS – Mobility as a Service

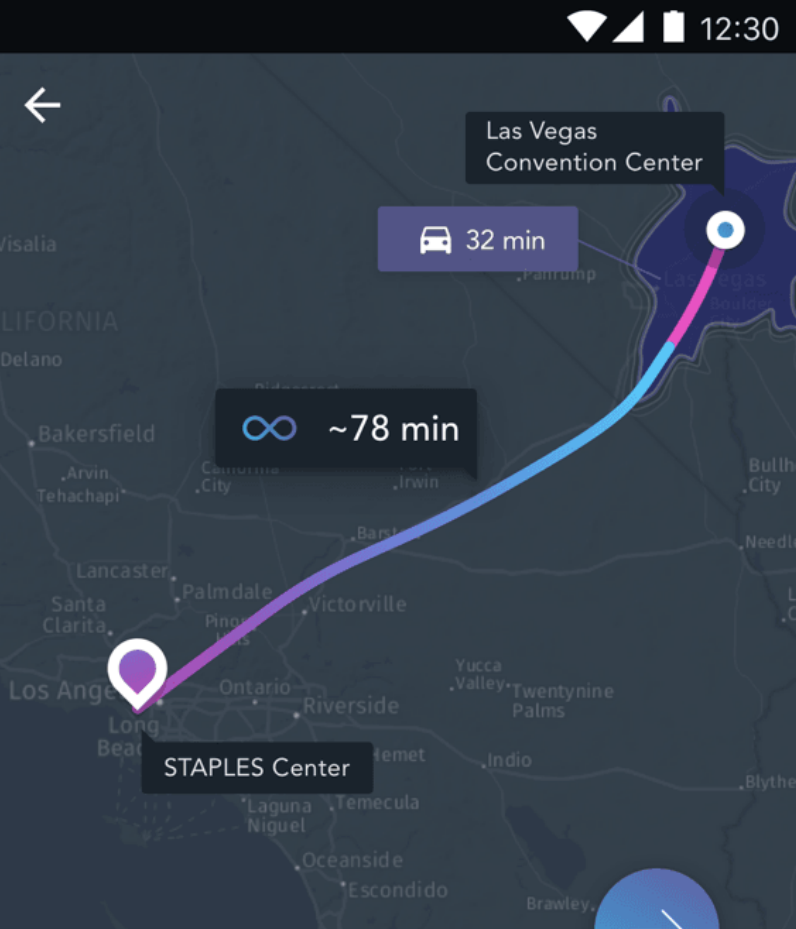


Source: Waymo



Emerging Technology





Recommended travel option



STAPLES Center
1111 S Figueroa St, Los Angeles, CA

Leave: [Now](#) +5 min +10 min

TRIP DETAILS

ETA: 1:22pm
278 mi

FASTEST TRAVEL OPTION

 +  **The Fast Round Trip**



12:45pm ————— 1:22pm

[Go to trip details →](#)

COMPARE WITH OTHER TRAVEL OPTIONS

12:42pm ————— 1:22pm
Fastest connection!



12:51pm ————— 3:09pm
Non-stop



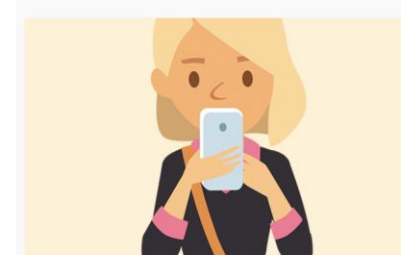
12:38pm —————
Earliest departure!



1:31pm —————



2:42pm —————



Whim Urban

49€

per month (cancel any time)

INTRODUCTORY OFFER

For regular travellers who could use the flexibility of a taxi or car occasionally.



Whim Unlimited

499€

per month (cancel any time)

INTRODUCTORY OFFER

Modern alternative for owning a car. At the price of owning a car you get unlimited access to public transport, taxi or a car according to your daily need.



Unlimited public transport ▼

Unlimited HSL's internal single tickets in Helsinki, Vantaa and Espoo included, with regional tickets available on demand or as monthly add-on.



Taxi rides for 10€ ▼

5km rides (from pickup location) with Taksi Helsinki and Lähtitaksi cost just 10€ through Whim. Perfect if you live far from public transport or for a late night at the bar. Rides under 10€ or over 5km are charged regular price.



Cars for 49€ a day ▼

No more browsing price comparison sites. With Whim Urban you have access to a Veho rental car for just 49€ per day. Perfect for that weekend trip!



City bikes ▼

Starting in Spring 2018 - info to follow.



Unlimited public transport ▼

Unlimited HSL's internal single tickets in Helsinki, Vantaa and Espoo included, with regional tickets available on demand or as monthly add-on.



Unlimited taxi rides ▼

Unlimited taxi rides with Taksi Helsinki and Lähtitaksi within a 5km radius of pickup included. Available every day you don't use the rental car (except the day of pick-up and return). Rides further than 5km available at regular price.



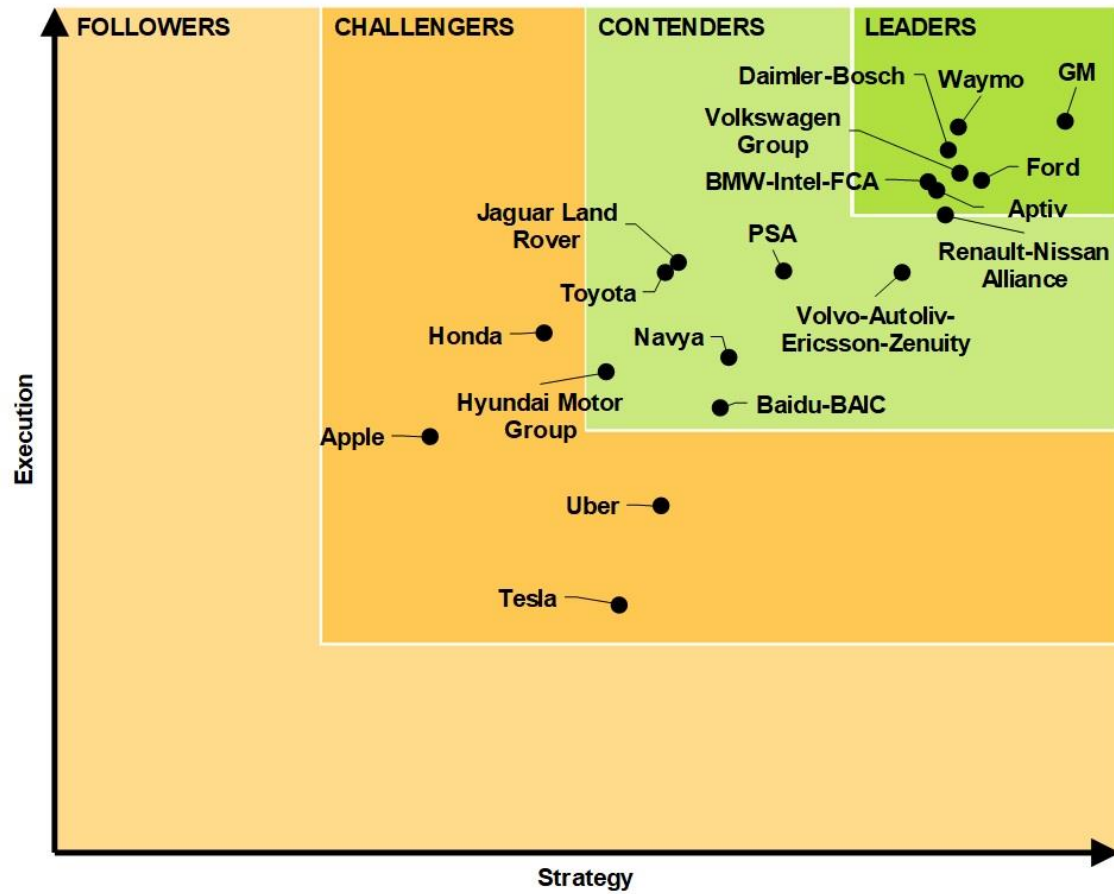
Unlimited car use ▼

Drive when you want - Veho rental car (Ford Fiesta or similar) at your disposal any day and duration according your needs. Includes unlimited mileage and additional driver. Need a van or a bigger car? Upgrade the car category for an additional daily price.

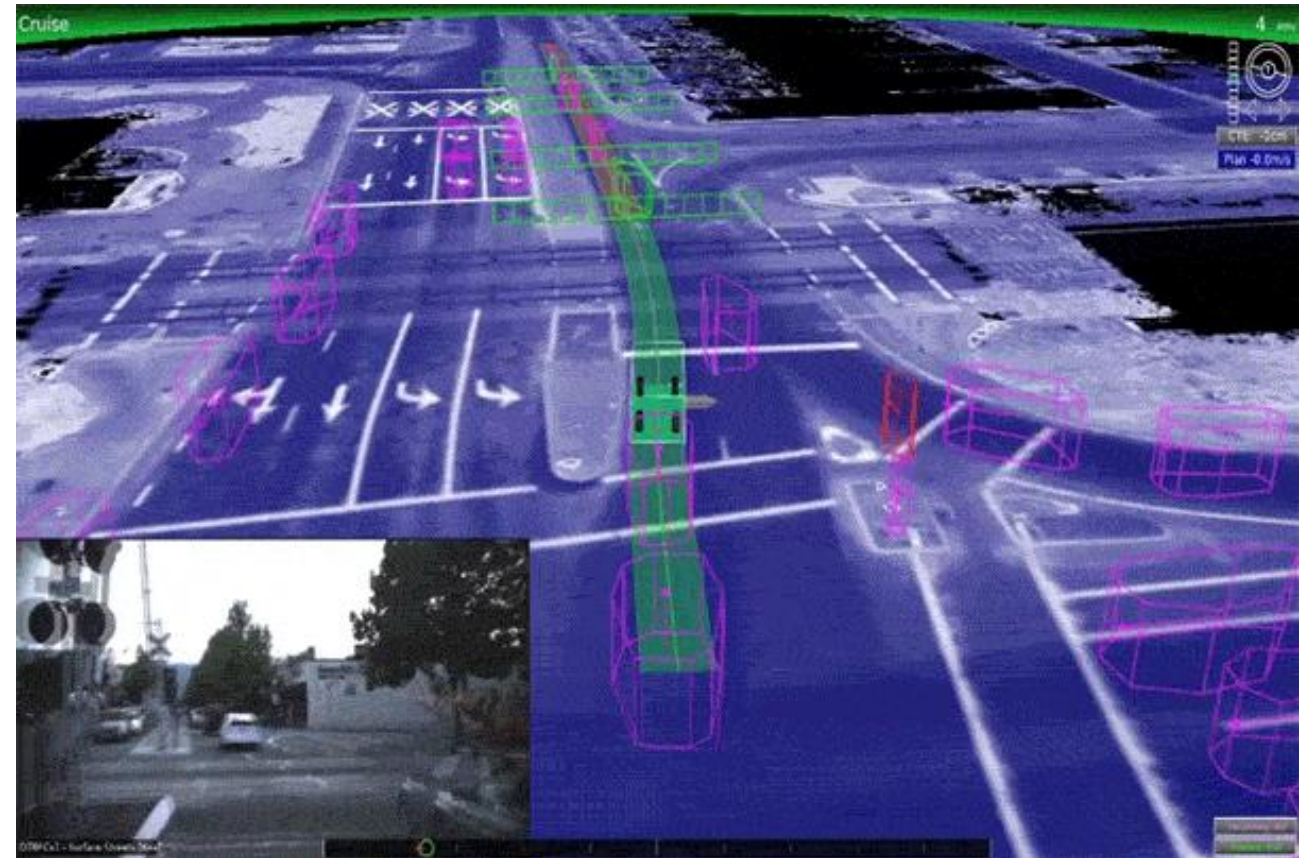


Unlimited City bikes ▼

Starting in Spring 2018 - info to follow.

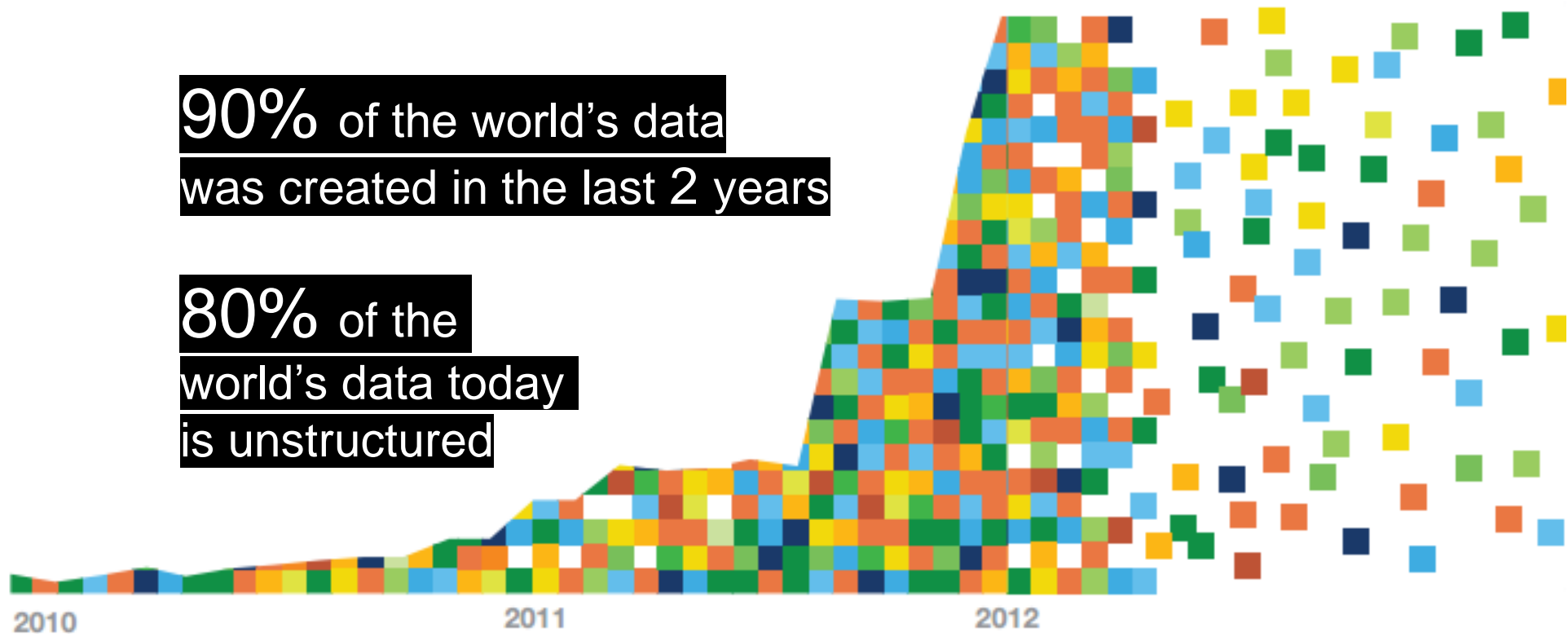


Source: Navigant Research



90% of the world's data
was created in the last 2 years

80% of the
world's data today
is unstructured



This isn't the A.I you are looking for.

"Alexa, turn on my
Chill Time"



"Alexa, turn off my
Bedroom Sonos"

"Alexa, turn on
the TV"

● ALPHAGO
00:10:29



This is the A.I.

● LEE SEDOL
00:01:00





The best IoT device there is.



What happens to cities?

Real estate?

Urban design?

Industries?

An aerial photograph of a city grid. Numerous rectangular and irregular shapes representing building footprints are highlighted in a semi-transparent yellow color. These highlighted areas are scattered throughout the city, with a higher concentration in the central and right-hand portions of the image. The background shows the actual city streets, buildings, and some green spaces.

Parking to infill development.

Increased density and walkability.

Tension with...

**Extending the reach of the
American edge city.**



1900



2007



2030



2050



1.4 million new people are moving into cities every week.

People are drawn to cities as centres of economic activity, social connection, opportunity, and innovation.



Self organizing streets?



REFERENCE
<https://peopleandplacesprojects.wordpress.com/2012/10/24/the-life-and-death-of-shared-space/>



Queuing reigns supreme?

A delivery person in a blue jacket and high-visibility yellow vest holds a large brown Amazon Prime Now cardboard box. The box has a shipping label with 'E2A', '8:00 AM', '10:00 AM', and 'S'. The background shows a stadium with a statue of a player and a blue locker room door.

Just in Time Delivery Logistics

The Future Garage?



Take away

Private investment is driving smart cities advancements, which in turn is driving the future of the built environment, real estate, and industries.

Public sector need to have a seat at the table in shaping priorities.

For more information:
Steven Duong, AICP
steven.duong@aecom.com